

**Conform to Standards
ASTM
D 2163 and
D 2598**

Product description

The MobilGC is a gas-phase chromatograph and easy to use. Measurement of gas composition according to ASTM standards D 2163 (LPG analysis) and D 2598 (evaluation method) is possible with combination of the Sampling Box.

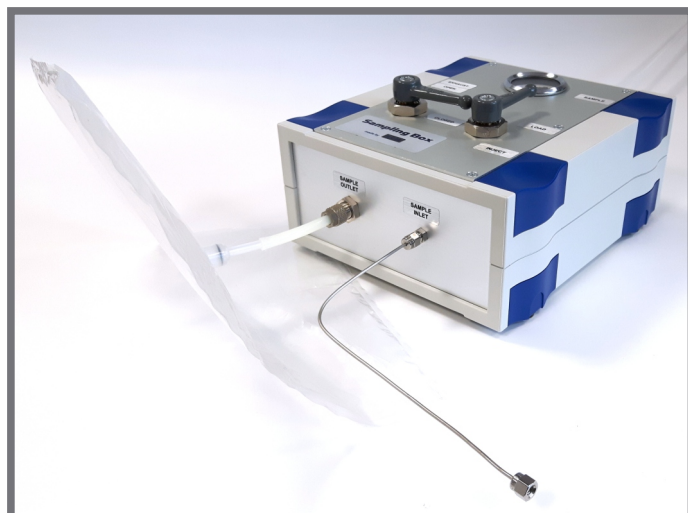
The rugged case and the internal gas supply allow the LPG analysis on-site at the measurement points. The measurement sensitivity fulfills the requirements of the ASTM standards: 0.1 to 100 % of clean gas components.

For sample preparation the Sampling Box has to be connected with the gas bottle or sampling line of the liquefied gas and with a sampling bag. 5 ml liquefied gas is taken and transferred to the sampling bag for expansion. In this way you can also make gas mixtures by addition of further components, e. g. for calibration.

For analysis the sampling bag has to be connected with the MobilGC. A heated column separates the gas sample. With the comfortable software of MobilGC an easy chromatogram evaluation according to standards is possible. The integrated expert evaluation system shows the result as concentration and additionally as total MON number or as MON value separately for each component.



MobilGC with connected gas sampling bag



Sampling Box for transformation of liquefied gas into gaseous samples

Applications

The analytical system is suitable for (depending on type of chromatography column)

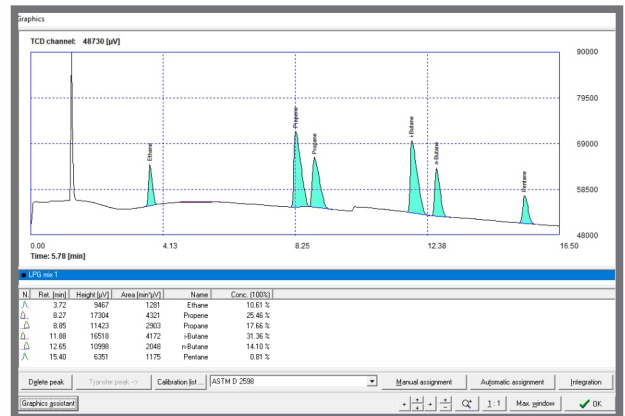
- Determination of LPG composition
- Measurement of Motor octane number (MON)
- Check purity of LPG (content of pentane)
- Analysis of refrigerants
- Production and measurement of calibration mixtures

Advantages

- Simple sample preparation with Sampling Box
- Sample loop with 5 ml volume (also other sizes applicable)
- MobilGC with internal carrier gas supply for on-site analysis
- With up to 80 operating hours
- Easy refilling of gas supply
- Measurement sensitivity 0.1 to 100 %
- Result as concentration, as total MON number or as MON value for each component

MobilGC with thermal conductivity detector (TCD):

- Robust device with simple handling
- Only one gas type required
- Helium as carrier gas (according to standard ASTM D 2163)
- Simple sample handling



Chromatogram of a LPG sample

Result of measurement
Measurement no. 1 Expert system
Data base: Method by ASTM D 2538

Physical properties of LP-Gas components:

Component	% Conc.	Partial gage vapor pressure [kPa]	Relative mass	Partial MON
Ethane	10.61	512	0.03773	10.7
Propane	17.66	212	0.08956	17.2
Propane	25.46	374	0.13264	21.6
n-Butane	14.10	36	0.08234	12.6
i-Butane	31.36	125	0.17649	30.6

Result parameters of LP-Gas:

Parameter	Result
LP-Gas vapor pressure	1260 kPa
LP-Gas relative density	0.519
Motor octane number	92.5

Evaluation by expert system

Specifications

MobilGC

Measurement range:	0.1 ... 100 %
Resolution:	0.01 %
Typical duration:	2 ... 30 min (depending on sample)
Temperature of column oven:	Max. 250 °C, controllable with individual temperature program
Internal gas supply:	Approx. 80 h operating period
Power supply:	230 V/50 Hz
Power input:	Max. 240 W
Dimensions, weight:	56 x 46 x 32 cm (W x H x D), 23 kg

Sampling Box

Sample volume:	Sample loop with 5 ml volume (also other sizes applicable)
Sample pressure:	Max. 10 bar
Dimensions, weight:	17 x 9 x 20 cm (W x H x D), 1 kg

We are here for you



ECH Elektrochemie Halle GmbH
Otto-Eissfeldt-Str. 8
D-06120 Halle (Saale)
Germany
Tel.: +49 345 279570-0
Fax: +49 345 279570-99
E-mail: info@ech.de
Website: www.ech.de